



DC Switch-disconnectors and Fuse-combination Units  
SYH6Z-1600

SYH6Z DC Switch-disconnectors and Fuse-combination Units are suitable for DC systems with a rated operating voltage of DC1500V or below and a rated operating current of 1600A or below, providing functions of main circuit connection, breaking, isolation, and protection. Typical application scenarios include energy storage, photovoltaics, and DC distribution.

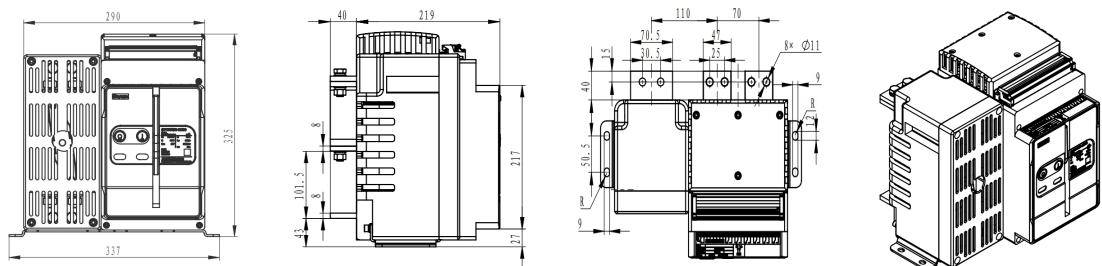
Compliance with Standards

GB/T14048.3、 IEC 60947-3

Performance Parameters

S/N	Item	Unit	Parameter Value
1	Number of poles	P	2
2	Rated current Ie	A	1600
3	Rated operating voltage Ue	V	DC1500
4	Rated insulation voltage Ui	V	DC1500
5	Rated impulse withstand voltage Uimp	kV	12
6	Rated limiting short-circuit current Iq	kA	120
7	Fuse model		RSZ307-5-DAV-1800A1500V (Zhongrong) , ESS5-1800 (Bussmann) , H4FG2000(Hollyland), SYSG-1800(Sieyuan Low Voltage), etc.
8	Frame Type Switch-disconnectors		YW6GZ-1600 (Sieyuan Low Voltage)

Dimensions





## DC Switch-disconnectors and Fuse-combination Units SYH6Z-2500

SYH6Z DC Switch-disconnectors and Fuse-combination Units are suitable for DC systems with a rated operating voltage of DC1500V or below and a rated operating current of 2000A or below, providing functions of main circuit connection, breaking, isolation, and protection. Typical application scenarios include energy storage, photovoltaics, and DC distribution.

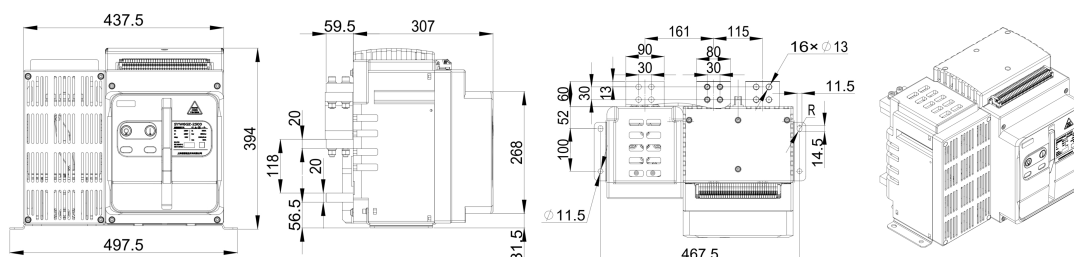
### Compliance with Standards

GB/T14048.3、IEC 60947-3

### Performance Parameters

S/N	Item	Unit	Parameter Value
1	Number of poles	P	2
2	Rated current $I_e$	A	2000
3	Rated operating voltage $U_e$	V	DC1500
4	Rated insulation voltage $U_i$	V	DC1500
5	Rated impulse withstand voltage $U_{imp}$	kV	12
6	Rated limiting short-circuit current $I_q$	kA	150
7	Fuse model	RSZ307-N-UJP-3000A (Zhongrong) , CBMG-3000A (Bussmann) , SYFSG- 3000A(Sieyuan Low Voltage), etc.	
8	Frame Type Switch-disconnectors	SYW6GZ-2500 (Sieyuan Low Voltage)	

### Dimensions





## DC Switch-disconnectors and Fuse-combination Units SYH6Z-4000

SYH6Z DC Switch-disconnectors and Fuse-combination Units are suitable for DC systems with a rated operating voltage of DC1500V or below and a rated operating current of 3200A or below, providing functions of main circuit connection, breaking, isolation, and protection. Typical application scenarios include energy storage, photovoltaics, and DC distribution.

### Compliance with Standards

GB/T14048.3、IEC 60947-3

### Performance Parameters

S/N	Item	Unit	Parameter Value
1	Number of poles	P	2
2	Rated current $I_e$	A	3200
3	Rated operating voltage $U_e$	V	DC1500
4	Rated insulation voltage $U_i$	V	DC1500
5	Rated impulse withstand voltage $U_{imp}$	kV	12
6	Rated limiting short-circuit current $I_q$	kA	150
7	Fuse model		RSZ307-N-UJP-3000A (Zhongrong), CBMG-3000A (Bussmann), SYFSG-3000A (Sieyuan Low Voltage), etc.
8	Frame Type Switch-disconnectors		SYW6GZ-4000 (Sieyuan Low Voltage)

### Dimensions

